

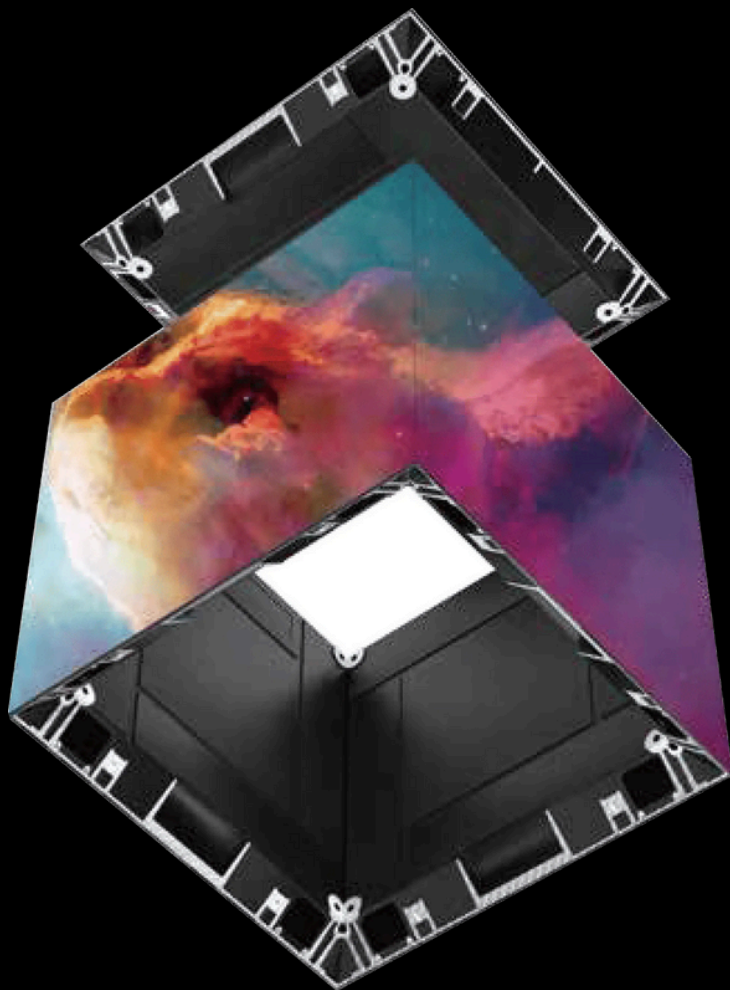
DX SERIES

THE MOST COST EFFECTIVE
INDOOR FIXED DISPLAY

DYNAMO
LED DISPLAYS

THE MOST COST EFFECTIVE INDOOR FIXED DISPLAY

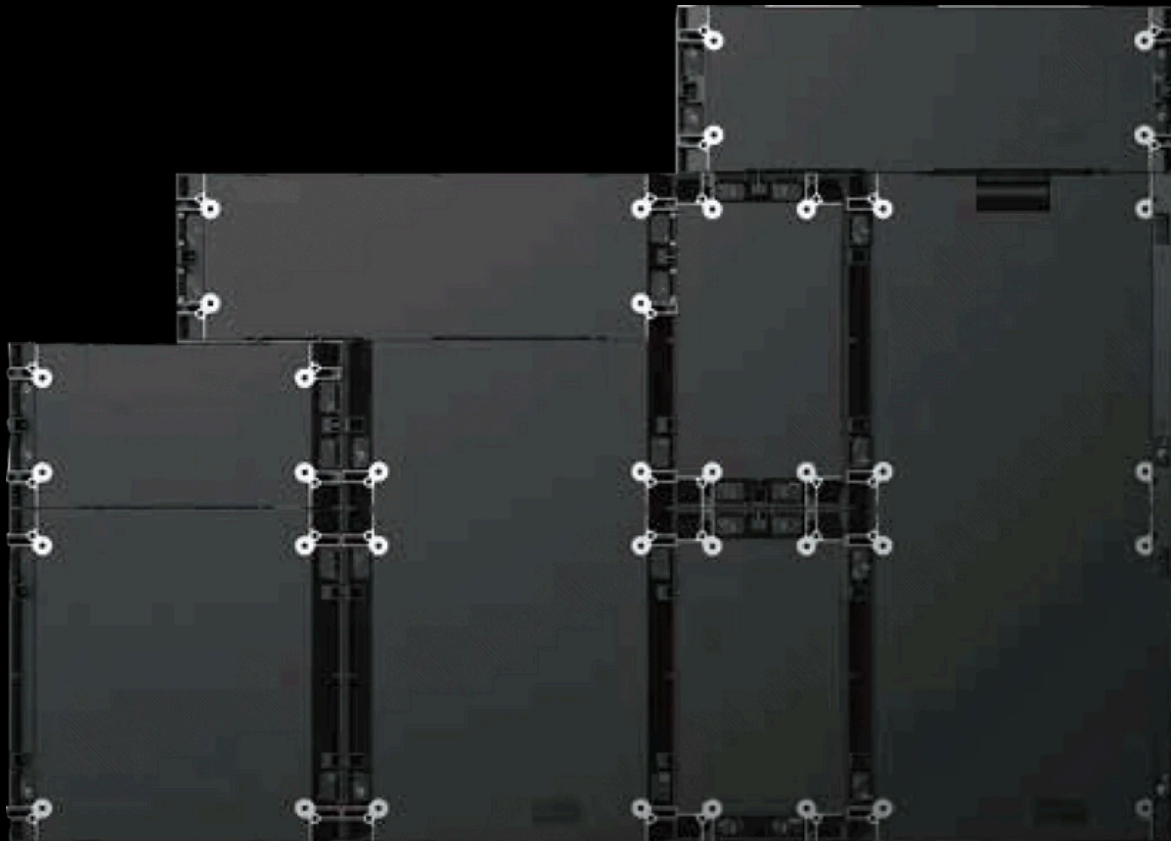
DX Series optimises the balance between minimised budget and satisfactory quality standard. DX Series will create the greatest value for you by freely combining cabinets of different sizes and standardised universal modules. Configurations on different sizes of cabinets help to reduce processing and hardware in each cabinet, ultimately keeping manufacturing costs down. Except for the tiles simplistic design, it is fully front serviceable making it ideal for indoor advertising solutions in high-end retail stores and other places.



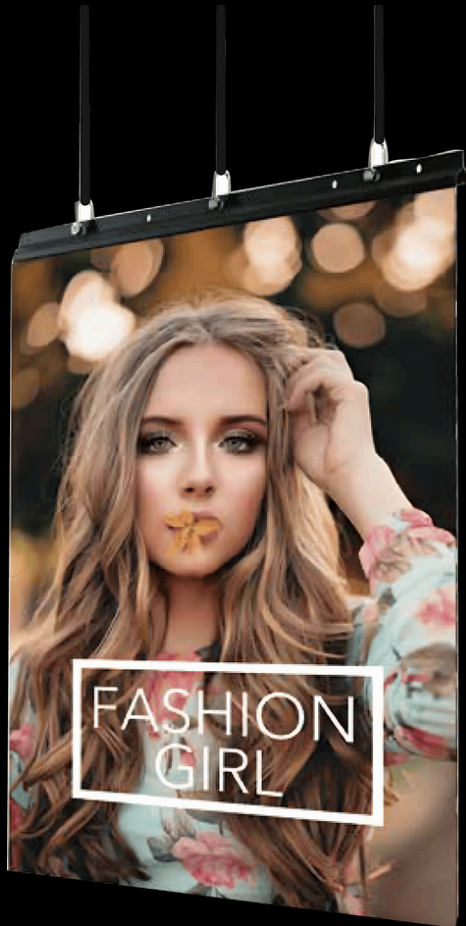
- Any Size You Want
- Ultra-light & Ultra-thin Design
- Perfect Flatness
- Interactive Touch Display
- Multiple Installation Methods
- Easy Service and Maintenance
- More Reliable

01. ANY SIZE YOU WANT

Variable installation sizes available by combination of cabinets in below 9 sizes:
500x1,000x47mm, 500x750x47mm, 500x500x47mm, 500x250x47mm, 250x500x47mm,
250x1,000x47mm, 250x750x47mm, 1,000x250x47mm, 750x250x47mm, which can perfectly
meet the dimensions of installation requirements

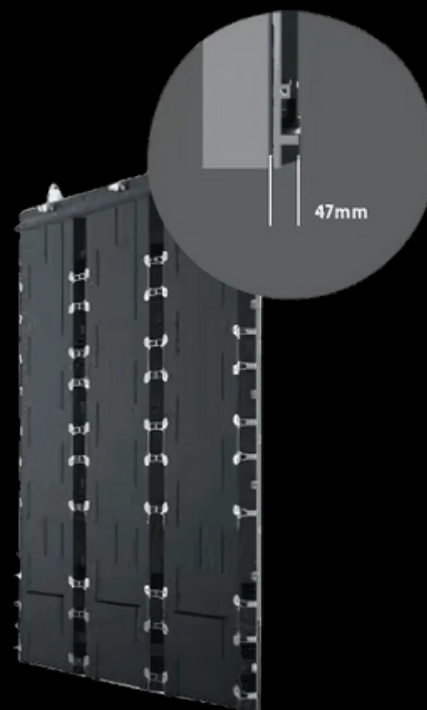


02. ULTRA-LIGHT & ULTRA-THIN DESIGN



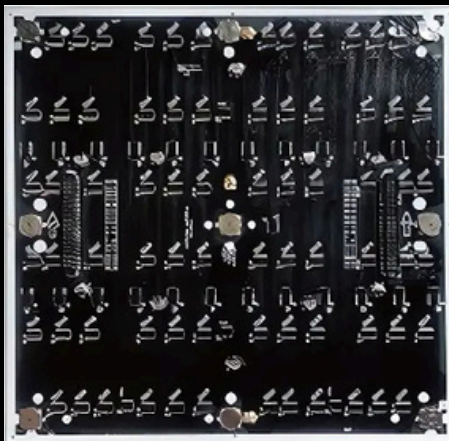
The Ultra-light and Ultra-thin design (thinnest 47mm) help to save the space for wall mounting. In addition, Atrium and other lifting solutions would be available with Dynamo's unique hanging beam.

The whole screen can be one beautiful pattern when viewing from the back.



03. PERFECT FLATNESS & CABLE FREE MODULES

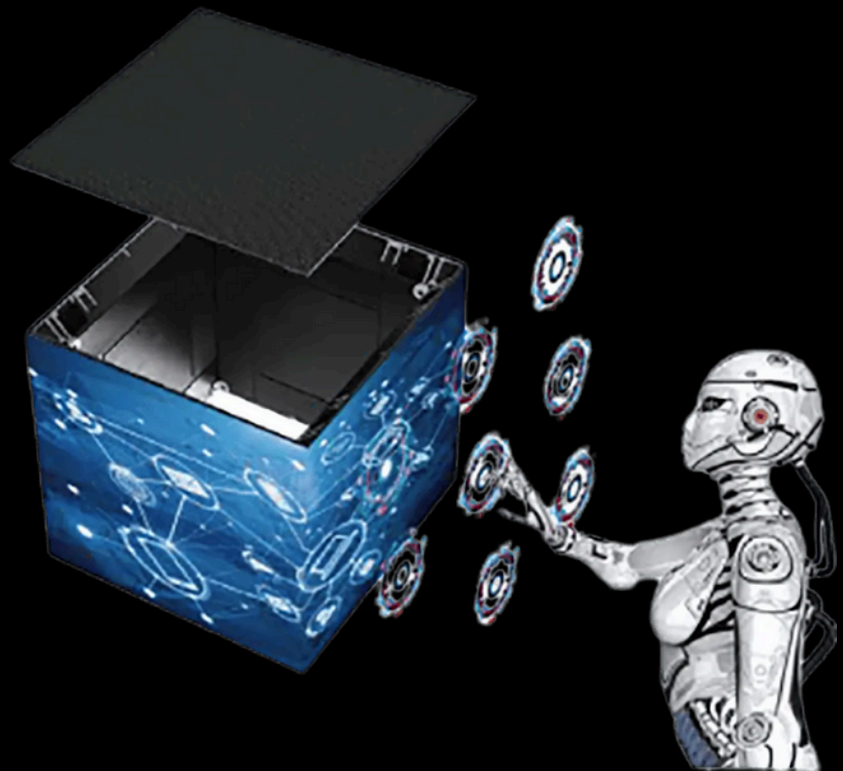
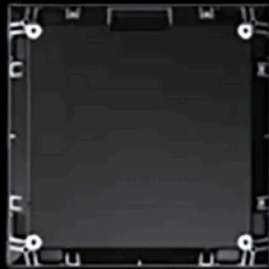
DX cabinets are made of die-cast aluminum ensuring high strength and high flatness.



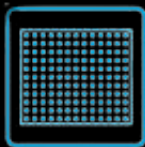
Modules adopt housing-free design to effectively avoid uneven mounting errors. Additionally, modules with direct PCB connection free of flat ribbon cables, guarantees a fast service in seconds and less faults.

04. INTERACTIVE TOUCH DISPLAY

DX TOUCH 500*500 cabinets can be added to displays or can form a cube shape, allowing you to capture audience's attention immediately and provide a stunning interactive experience for them.



INTERACTIVE TOUCH CUBE



1.9/2.6



800nits



0.01s



256/m²



COT

Pixel Pitch(mm):1.8/ 1.9/ 2.6

05. MULTIPLE INSTALLATION METHODS

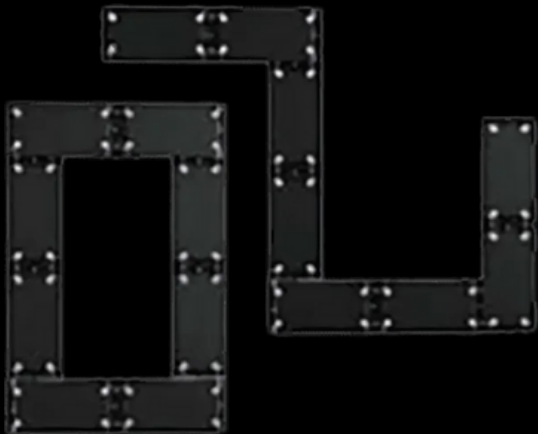
1. DX series supports both wall mounting and hanging installations.



2. Supports seamless right-angle installation.



3. Supports flexible splicing of 250x500mm cabinets.



06. EASY SERVICE AND MAINTENANCE

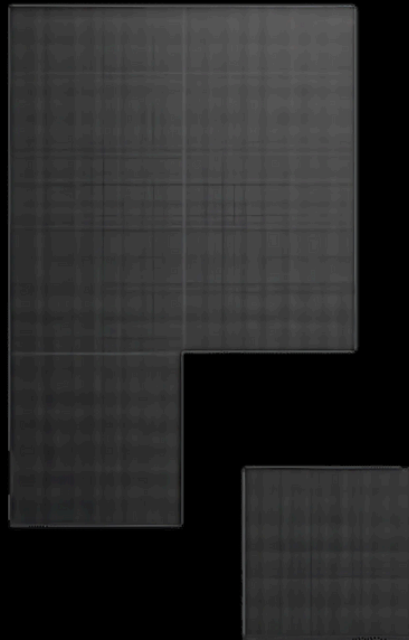
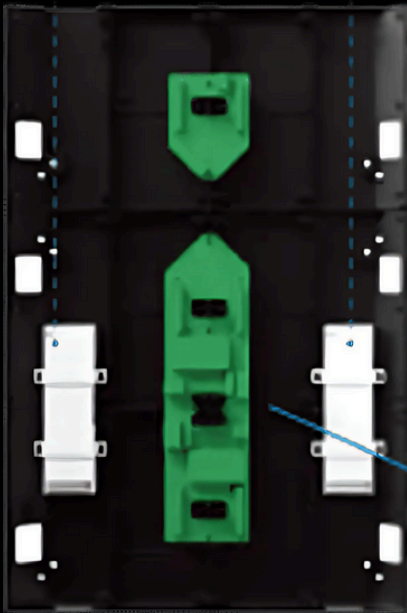
Hidden internal power and data cabling make it easy to maintain and install with less components to develop errors.



Easy and fully front serviceability

7. MORE RELIABLE

Redundancy options available including backup power supplies and additional receiver cards that can act as backups in the event of failures.



Modules have on-board calibration data which is automatically configured when replacing tiles.

Double Power Supply

8. PARAMETERS

Model	DX1.9	DX2.5	DX2.6	DX2.9	DX3.1	DX3.9	DX5.9	DX HB2.9	DX HB3.9
Pixel Pitch (mm)	SMD1515	SMD1515/ SMD2020 (Black)		SMD2020 (Black)			SMD1921		
Brightness	≥800			600-800			≥3000		
Module Size (WxH mm)	250x250								
Module Resolution	128x128	100x100	96x96	84x84	80x80	64x64	42x42	84x84	64x64
Refresh Rate (Hz)	≥2880	≥3840							
Viewing Angle (H/V)	160°/140°							140°/140°	
Grayscale (Bit)	14 bit								
Cabinet Size (WxHxD mm)	500 x 1,000 x 47								
Cabinet Weight (kg/panel)	11.2/8.5/6.5/3.5/3.5/6.4/5/6.4/5								
Power Consumption (Max/Avg W/m2)	450/150							600/200	



CONTACT



146a Brick Lane, London, E1 6RU



0203 489 9878



Rowan House, Long Toll, Oxfordshire, RG8 0RR



sales@dynamo-led-displays.co.uk



0845 257 2300



FOR MORE INFO VISIT MY WEBSITE [HTTPS://DYNAMO-LED-DISPLAYS.CO.UK/](https://dynamo-led-displays.co.uk/)