

# DRX SERIES

## SOLUTION OF XR/VIRTUAL PRODUCTION

COMPATIBLE WITH 60MM FRAME SYSTEM  
COVER PLATE TRAY FUNCTION

EXTEND CREATIVITY TO INFINITY



**DYNAMO**  
LED DISPLAYS

# OUTDOOR SPECIFICATION



- XGOB: Exterior GOB
- Flip Chip
- S-lock optional for safety maintenance
- Front / Rear Maintenance
- Diecasting aluminum
- Cover Plate
- Tray Extension

# OUTDOOR SPECIFICATION

PITCH	P0.976	P1.25	P1.56	P1.95	P2.6	P2.97	P3.9
SERIES	DRX097d	DRX125d	DRX156d	DRX195d	DRX260d	DRX297d	DRX390d
MICROX MODE (cd/m <sup>2</sup> )	>3000	>3000	>3500	>3500	>3500	>3500	>5000
DISTANCE	>0.98m	>1.25m	>1.56m	>1.95m	>2.6m	>2.97m	>3.9m
LED KIND	MIP0606	MIP1010	MIP1010	MIP1010	MIP1010	SMD1515	SMD1921
PROTECTION	X-GOB	X-GOB	X-GOB	X-GOB	X-GOB	X-GOB /Mask	X-GOB /Mask
PIXEL DENSITY (dots/m <sup>2</sup> )	1,048,576	640,000	409,600	262,144	147,456	112,896	65,536
TECHNOLOGY	Micro X						
REFRESH RATE	1920Hz-3840Hz						
VIEWING ANGLE	160°(H)   160°(V)						
CONTRAST	10000:1						
MODULE SIZE	250 x 250 mm						
CABINET SIZE	500 x 500 x 60 mm						
CABINET RES (px)	512 x 512	400 x 400	320 x 320	256 x 256	192 x 192	168 x 168	128 x 128
SYSTEM	Stacking / Hanging / Stitching						
DRIVE MODE (Scan)	1/32	1/40	1/32	1/32	1/16	1/14	1/8
ENVIRONMENT	IP65 / IP54						
MAX POWER (w/m <sup>2</sup> )	(CCT) 600				(CAT) 750		
VOLTAGE	AC 100-240V						
WEIGHT	9.2kg/Panel						
CERTIFICATION	CE, EMC, TUV-EMC, FCC, ETL, PSE, RoHS						

# INDOOR SPECIFICATION

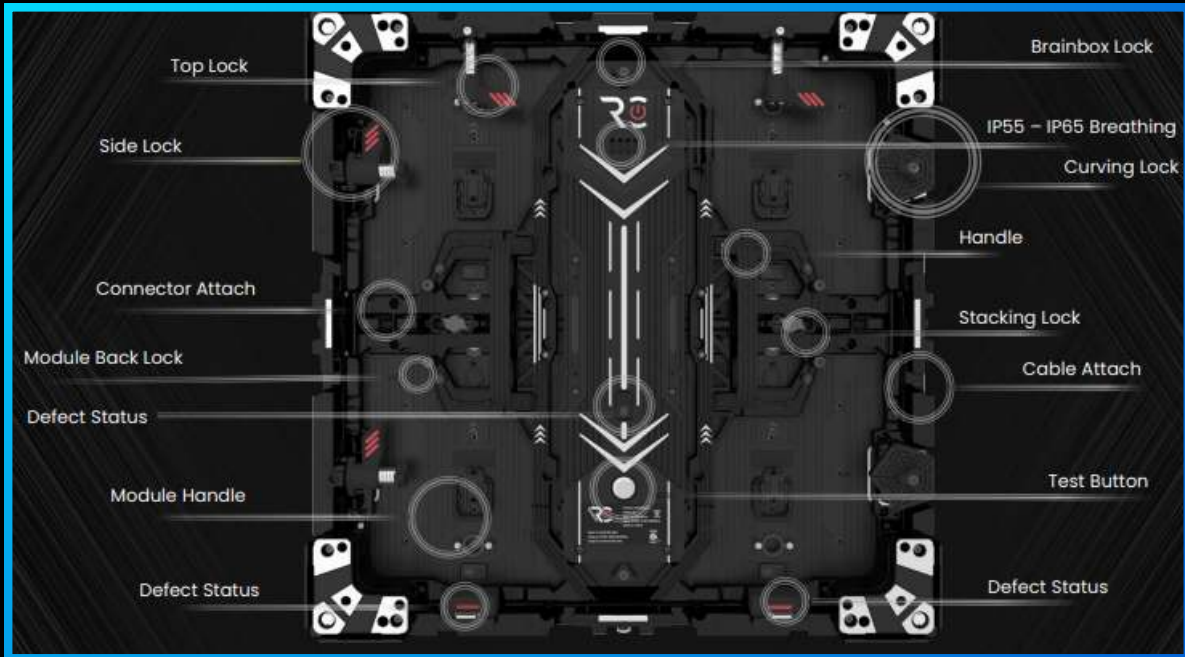


- XGOB: Exterior GOB
- Flip Chip
- S-lock optional for safety maintenance
- Front / Rear Maintenance
- Diecasting aluminum
- Cover Plate
- Tray Extension

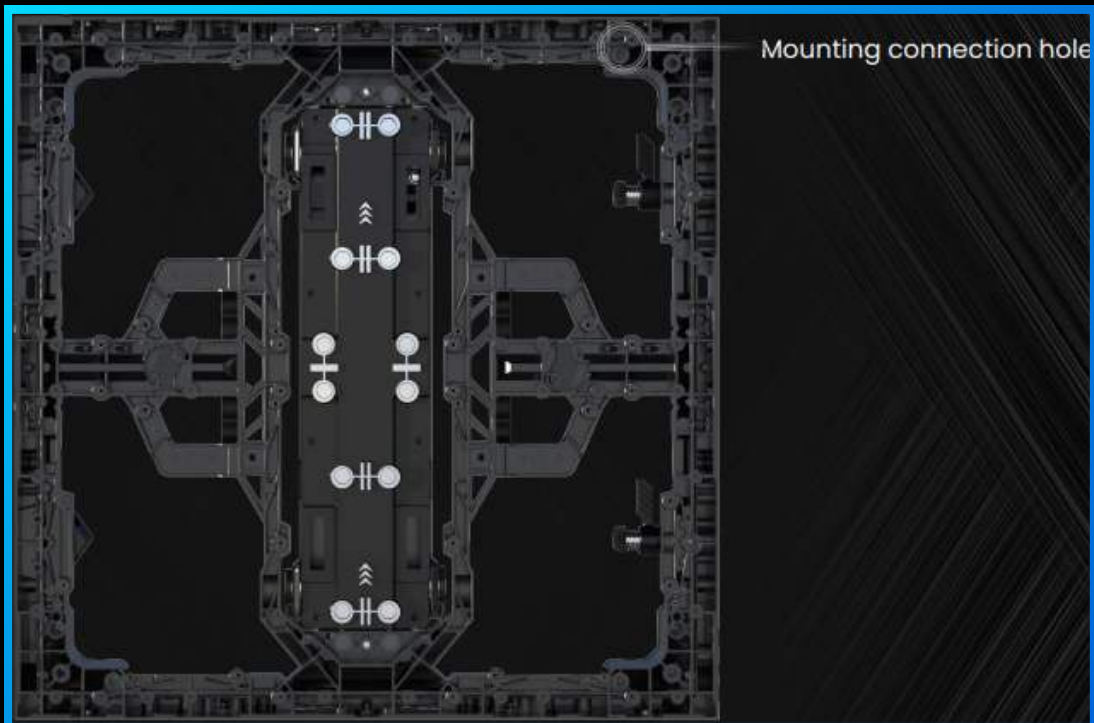
# INDOOR SPECIFICATION

PITCH	P0.976	P1.25	P1.56	P1.95	P2.6	P2.97	P3.9
SERIES	DRX097i	DRX125i	DRX156i	DRX195i	DRX260i	DRX297i	DRX390i
MICROX MODE (cd/m <sup>2</sup> )	>800	>800	>800	>800	>800	>800	>800
DISTANCE	>0.98m	>1.25m	>1.56m	>1.95m	>2.6m	>2.97m	>3.9m
LED KIND	SMD0606	SMD1010	SMD1010	SMD1010	SMD1010	SMD1515	SMD1921
PROTECTION	X-GOB	X-GOB	X-GOB	X-GOB	X-GOB	X-GOB /Mask	X-GOB /Mask
PIXEL DENSITY (dots/m <sup>2</sup> )	1,048,576	640,000	409,600	262,144	147,456	112,896	65,536
TECHNOLOGY	X-GOB						
REFRESH RATE	1920Hz-3840Hz						
VIEWING ANGLE	160°(H)   160°(V)						
CONTRAST	10000:1						
MODULE SIZE	250 x 250 mm						
CABINET SIZE	500 x 500 x 60 mm						
CABINET RES (px)	512 x 512	400 x 400	320 x 320	256 x 256	192 x 192	168 x 168	128 x 128
SYSTEM	Stacking / Hanging / Stitching						
DRIVE MODE (Scan)	1/32	1/40	1/32	1/32	1/16	1/14	1/8
ENVIRONMENT	IP30						
MAX POWER (w/m <sup>2</sup> )	520						
VOLTAGE	AC 100-240V						
WEIGHT	9.2kg/Panel						
CERTIFICATION	CE, EMC, TUV-EMC, FCC, ETL, PSE, RoHS						

# REAR VIEW



# FRONT VIEW



# DRX MOUNTING



1. Attach the profile to the wall by screw

2. Connect the connection plate with the profile by M6 screw

3. Attach cabinet without module to the corner and use the M6 screw through the mounting hole to connect connection plate

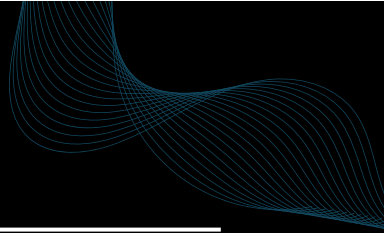
4. Then attach the cabinet near the previous one and lock the fast lock or top lock between them

5. Then install the module



# DRX MOUNTING

---



Final effect

Front maintainance



# DIFFERENT CNC COLOR

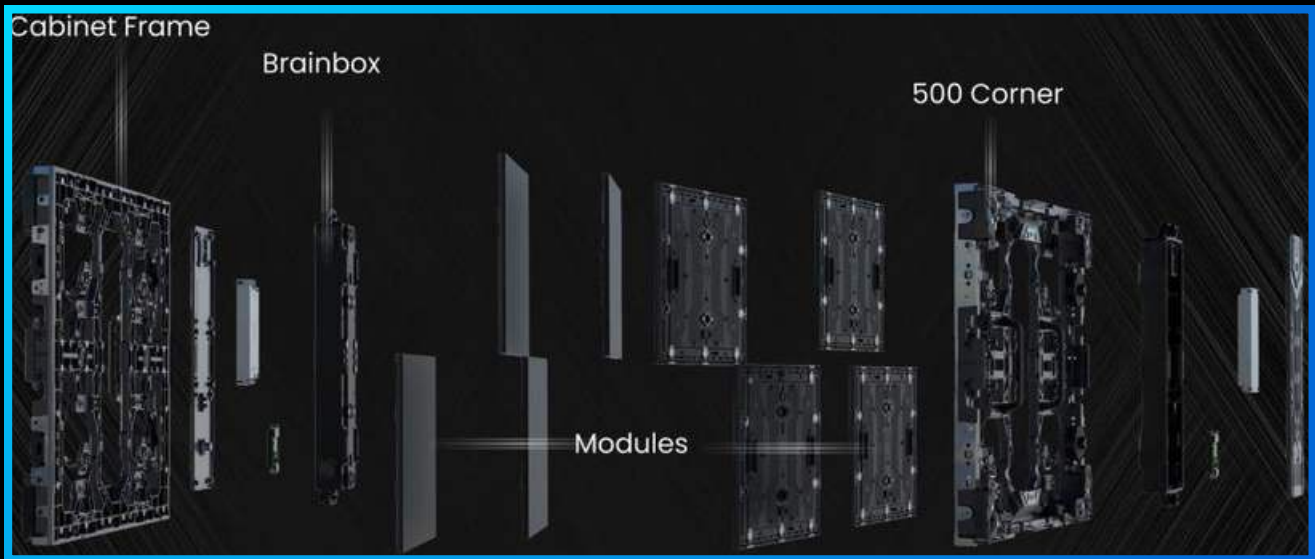
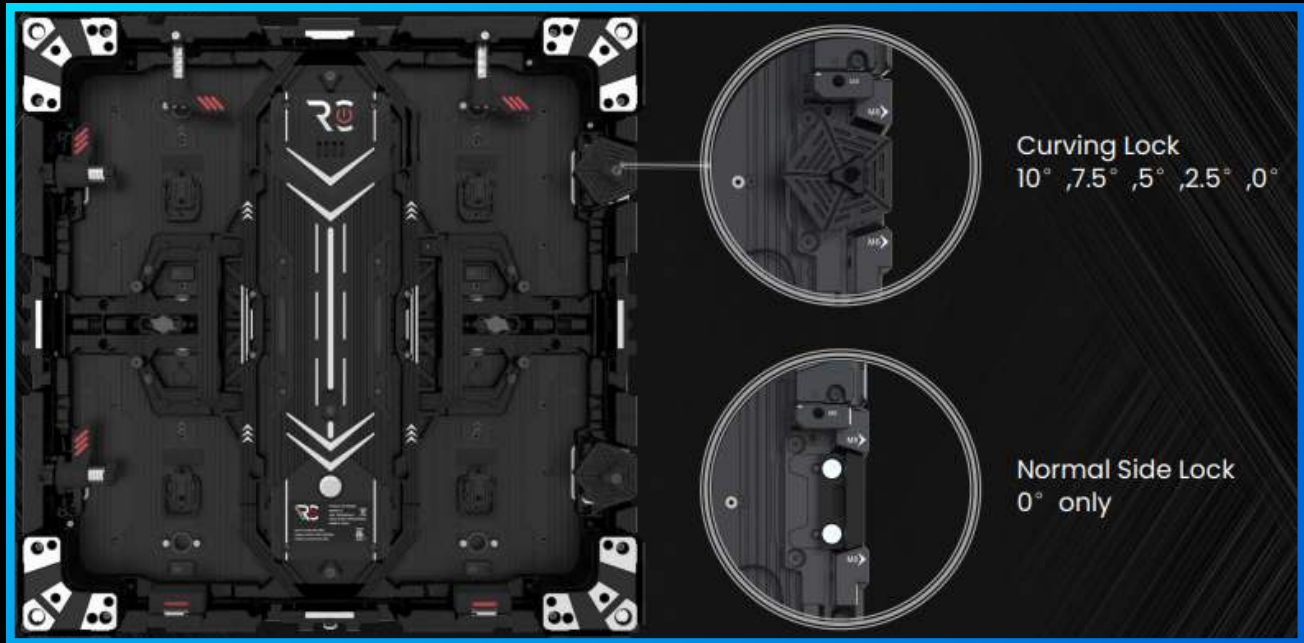
---



CNC color customizable. For both full black version and normal version



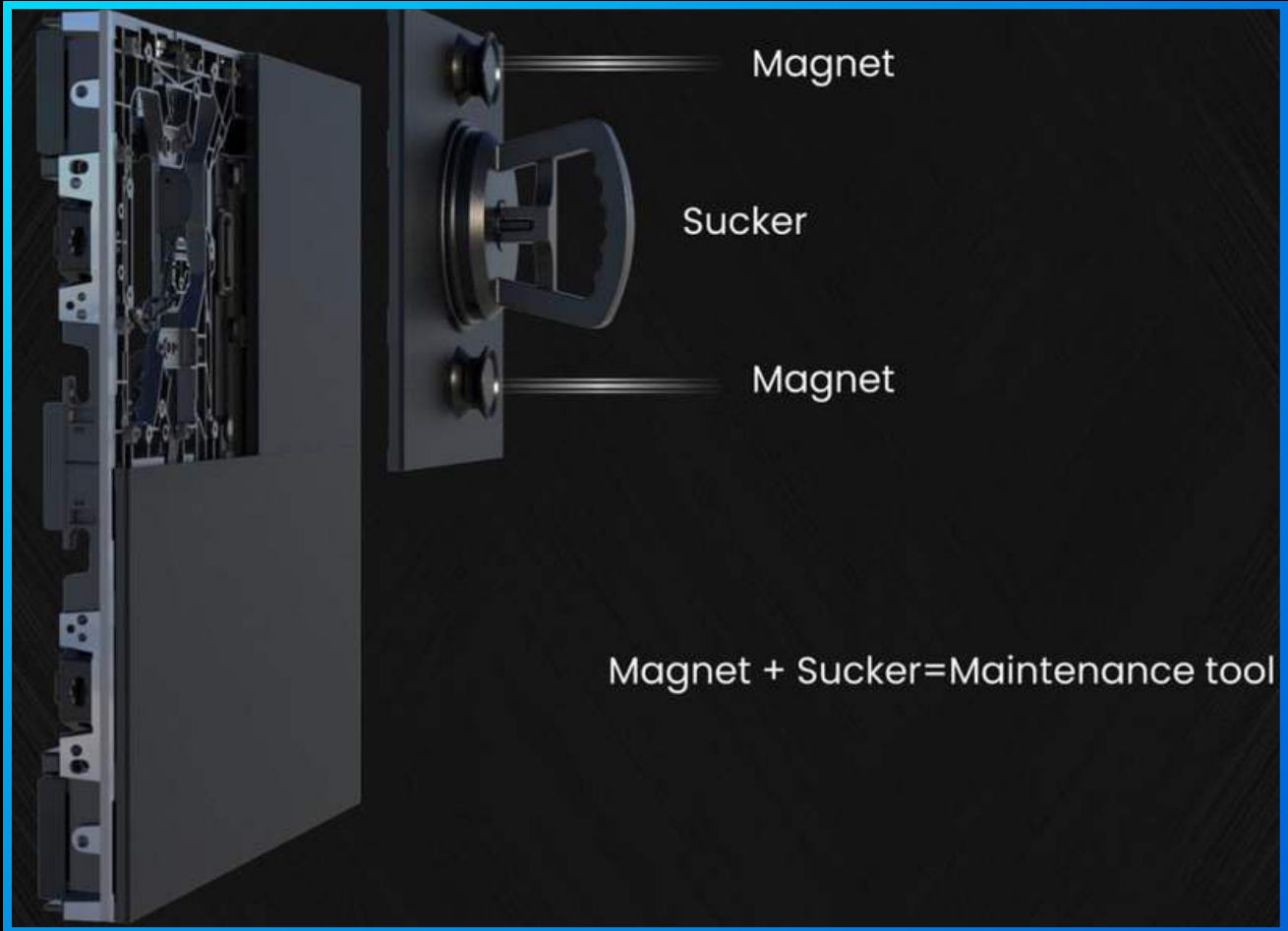
# SIDE LOCK



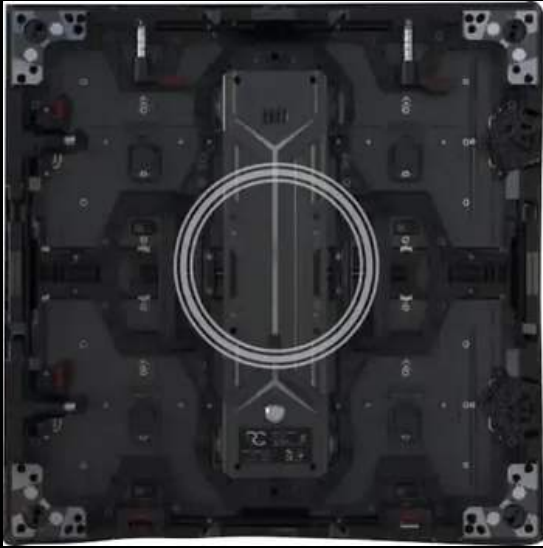
Front Maintenance

Back Maintenance

# MAINTENANCE TOOL



# VESA MOUNT



+

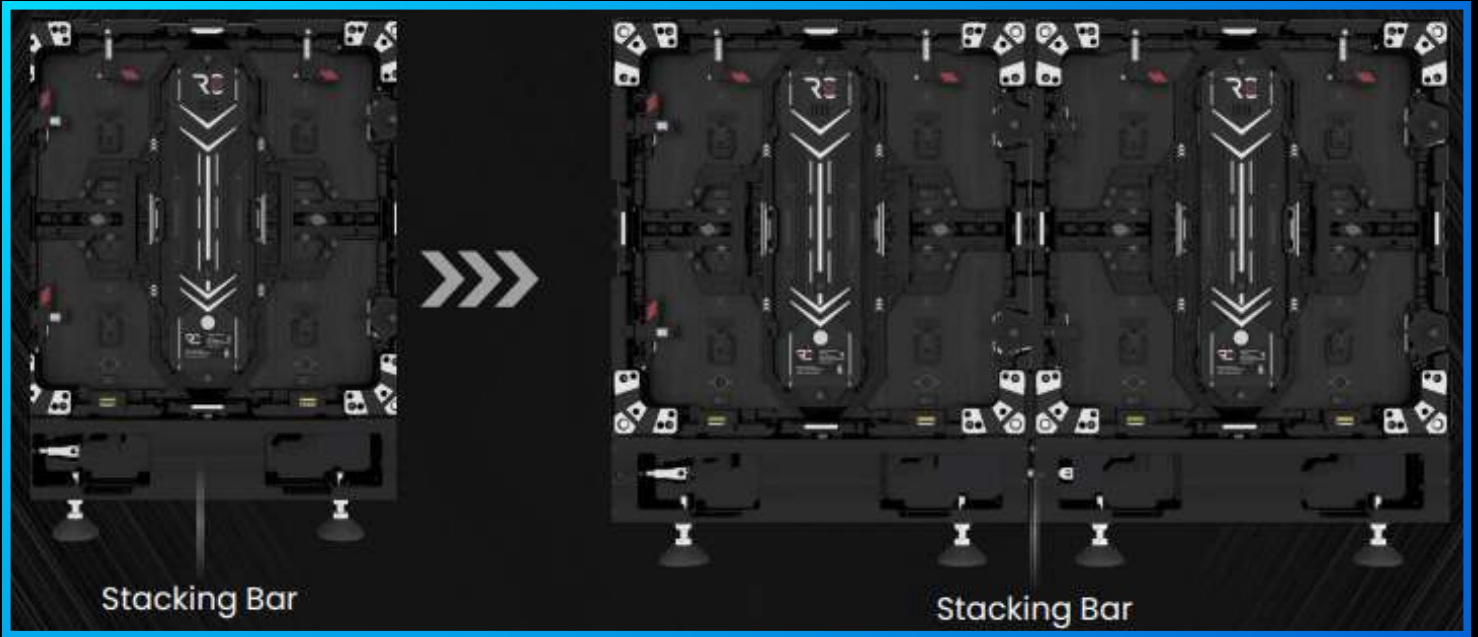


=

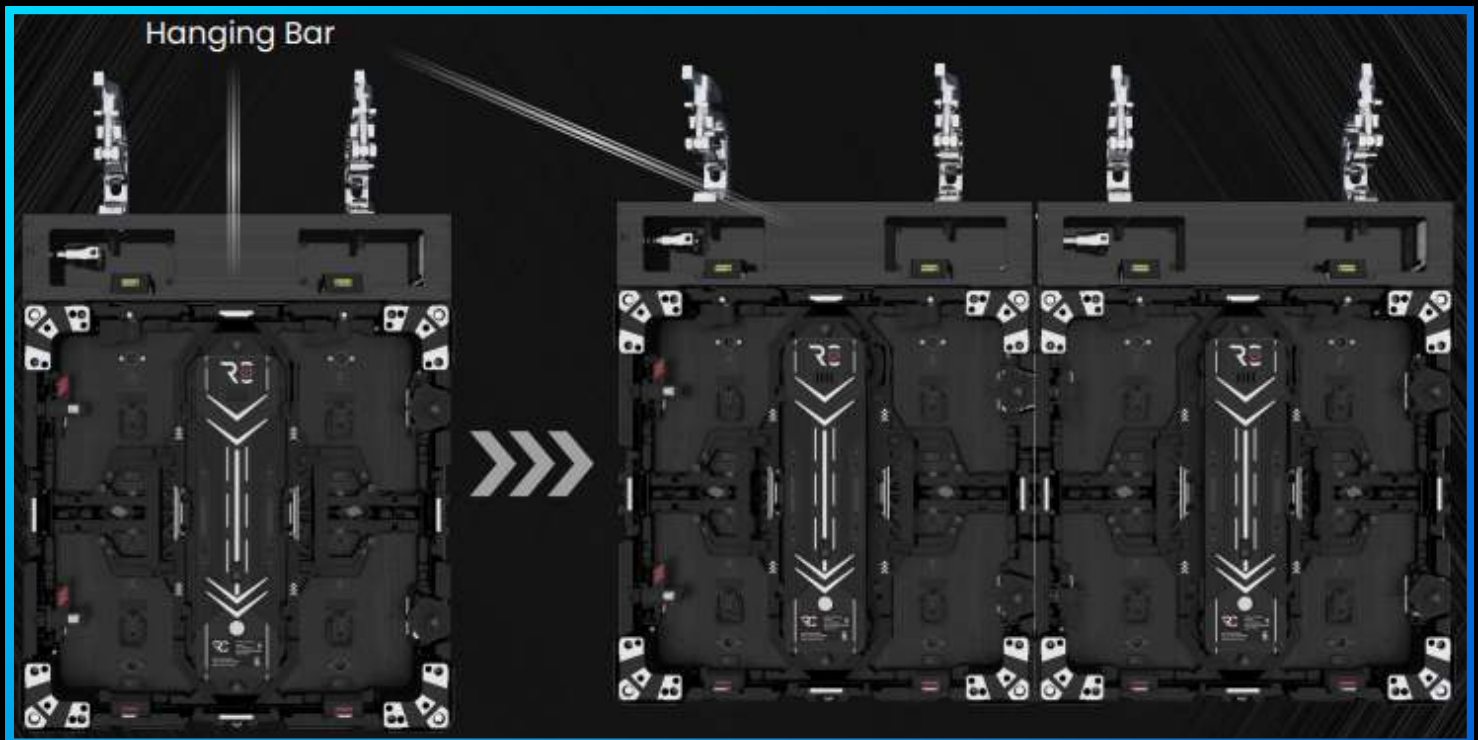


No need to worry about weight,  
usual arm can handle it

# STACKING SYSTEM

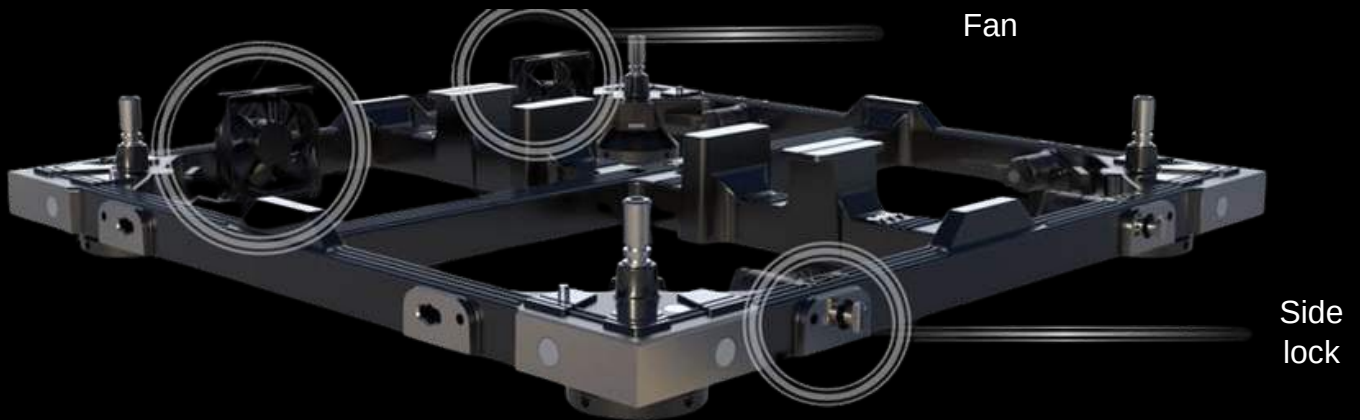


# HANGING SYSTEM



# STANDARD FLOOR SYSTEM

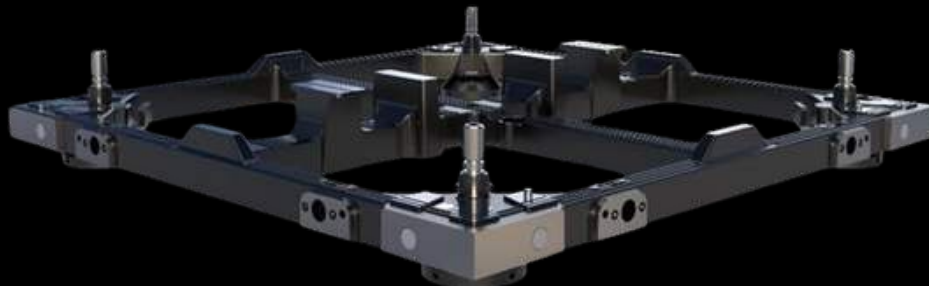
---



Upgraded floor tile construction adds fans and side locks

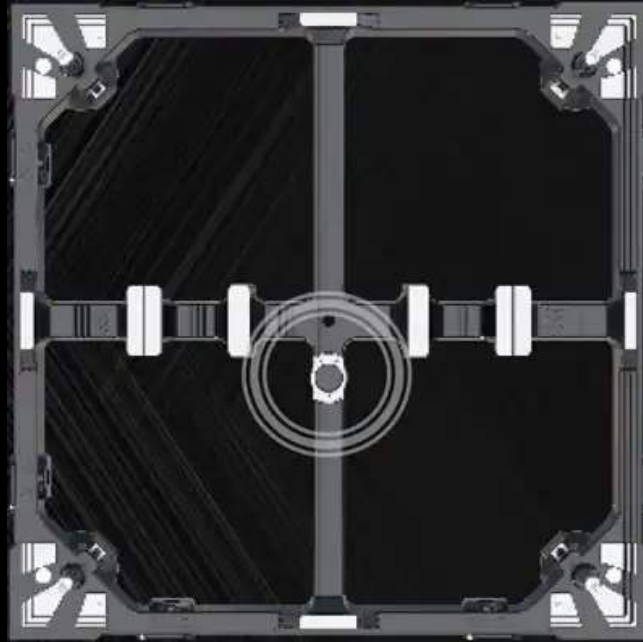
Fans for Heat dissipation

Side lock for convenience, can lock the floor structure as well as lock the cabinet.



Floor structure without accessories

# STANDARD FLOOR SYSTEM

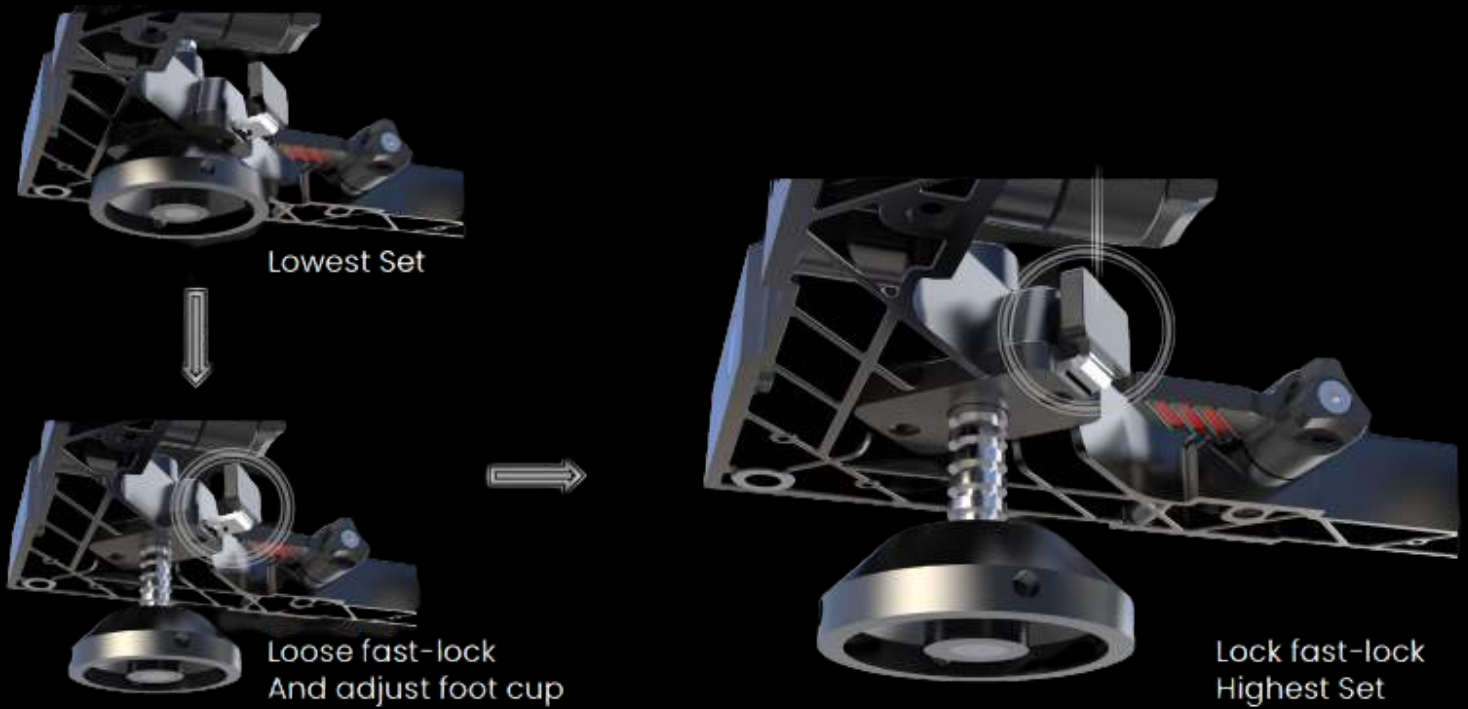


Floor structure without grader



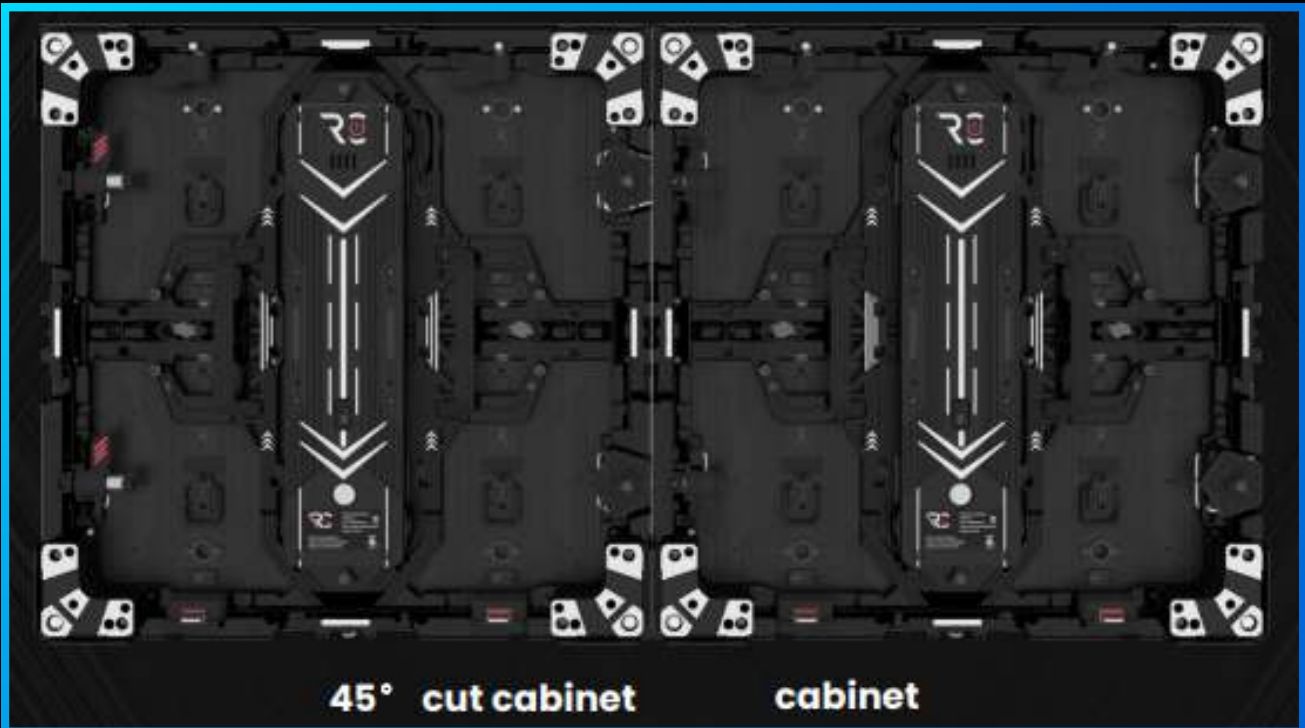
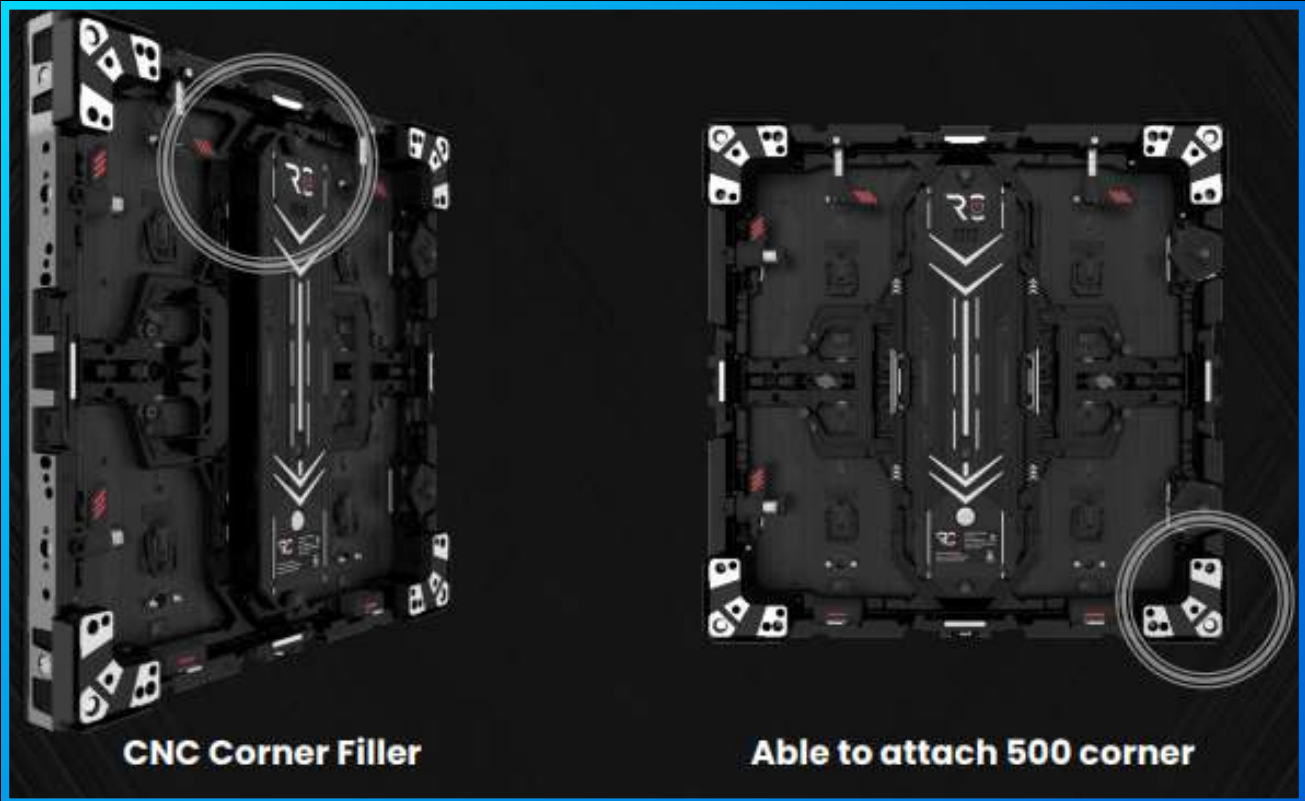
With grader Can easily adjust Flatness

# ADJUSTABLE HEIGHT



Also this makes it capable  
when dealing with rough surfaces

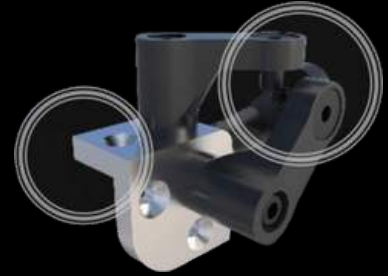
# CORNER FILLER



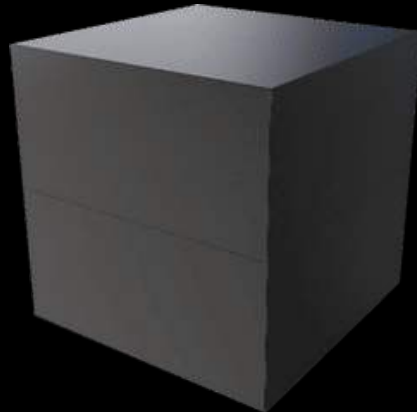
Able to connect with normal cabinet

# CORNER FILLER

Connect with cabinet

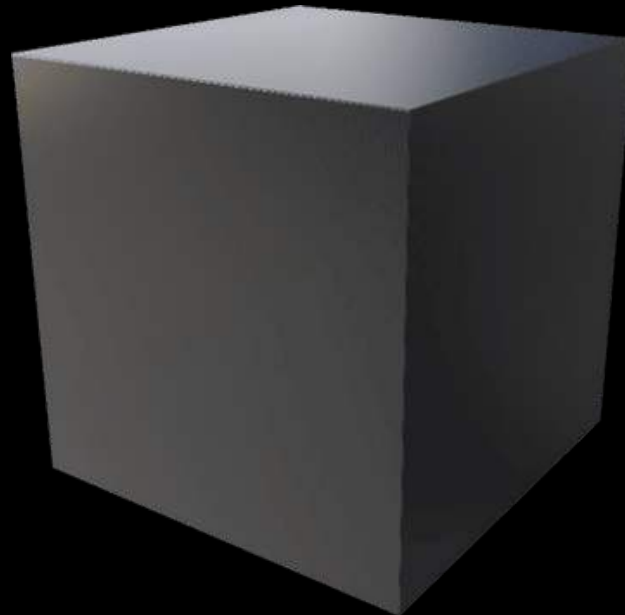


1\*1 cube



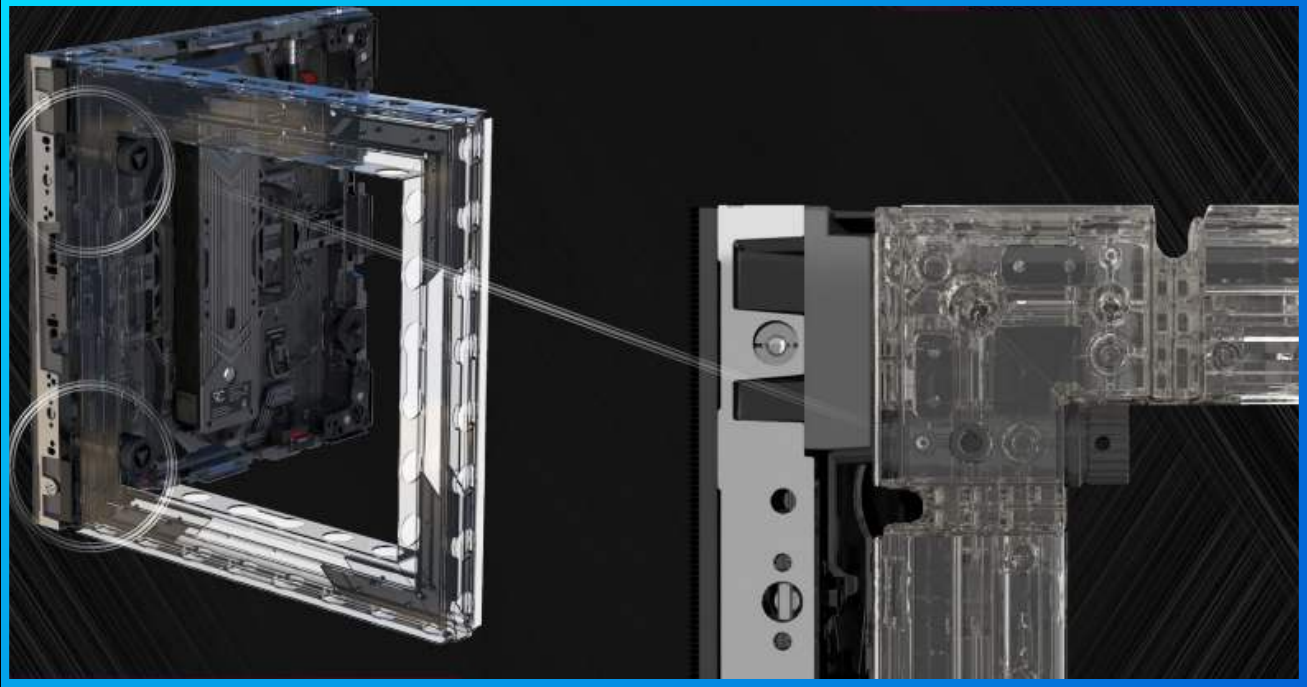
2\*2 cube

Cube Connector



3\*3 Cube

# REAR CONNECTION

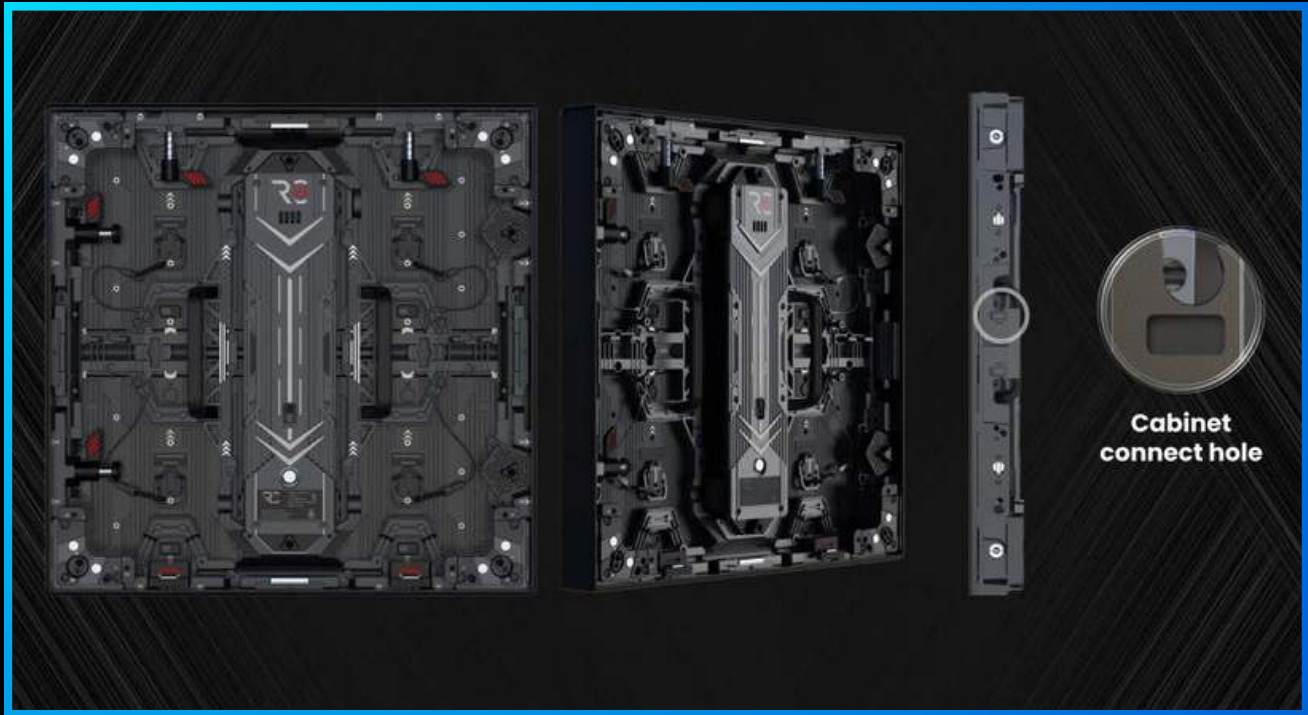


# COVER PLATE



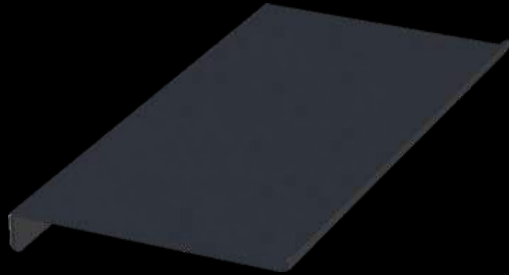
Cover Plate extension Attach to  
500 corner magnet

# TRIM CONNECTOR



Can be used in DRX frame

# TRAY EXTENSION



DRX can be combined with display tray to give the commodity a new display form.

It can be integrated with the media broadcast, optimizing the effect of commodity display.



Stainless steel



Translucency

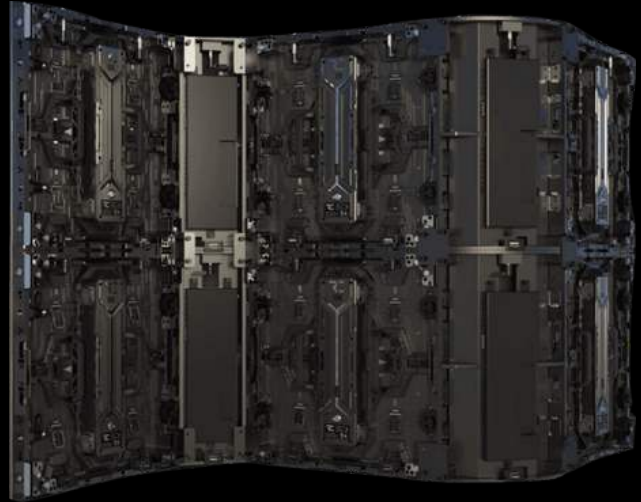


Normal

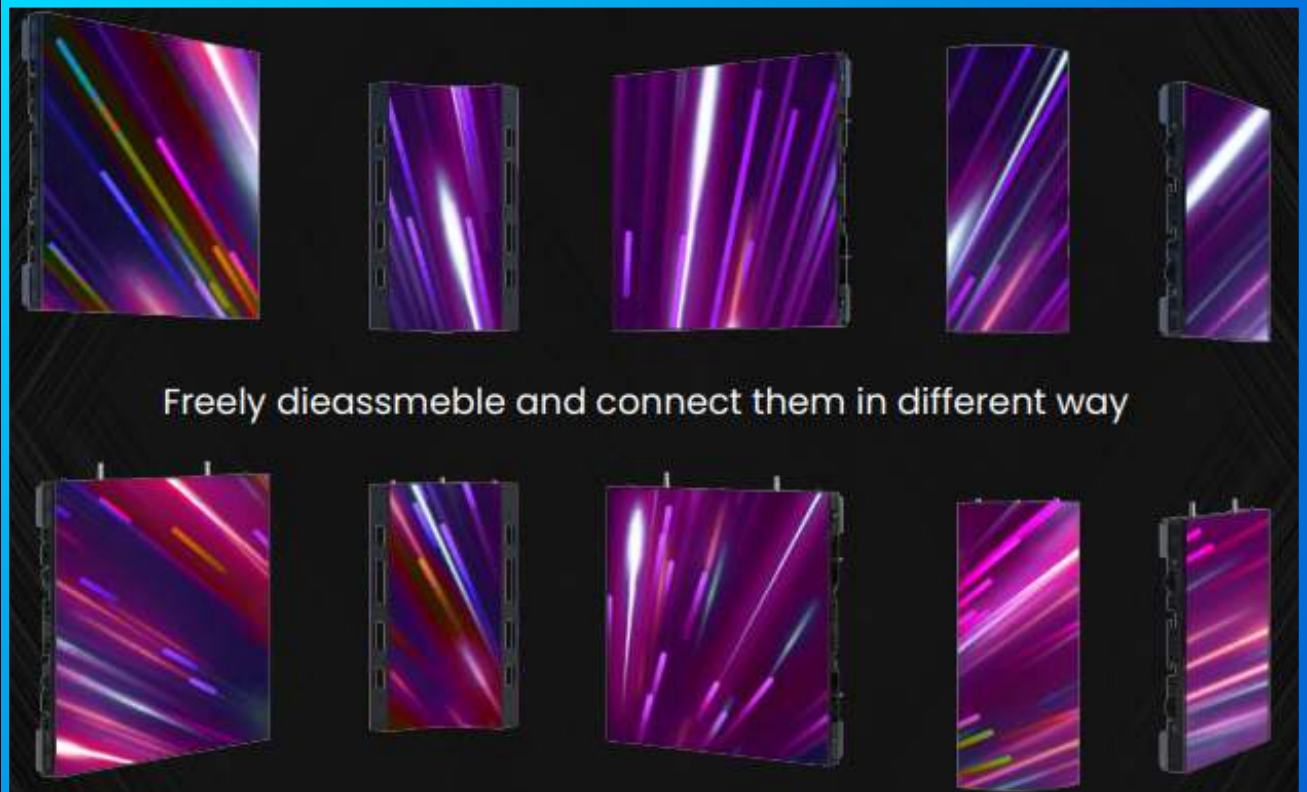
# 90 DEGREE CORNER



R158 ¼ circle concave & convex

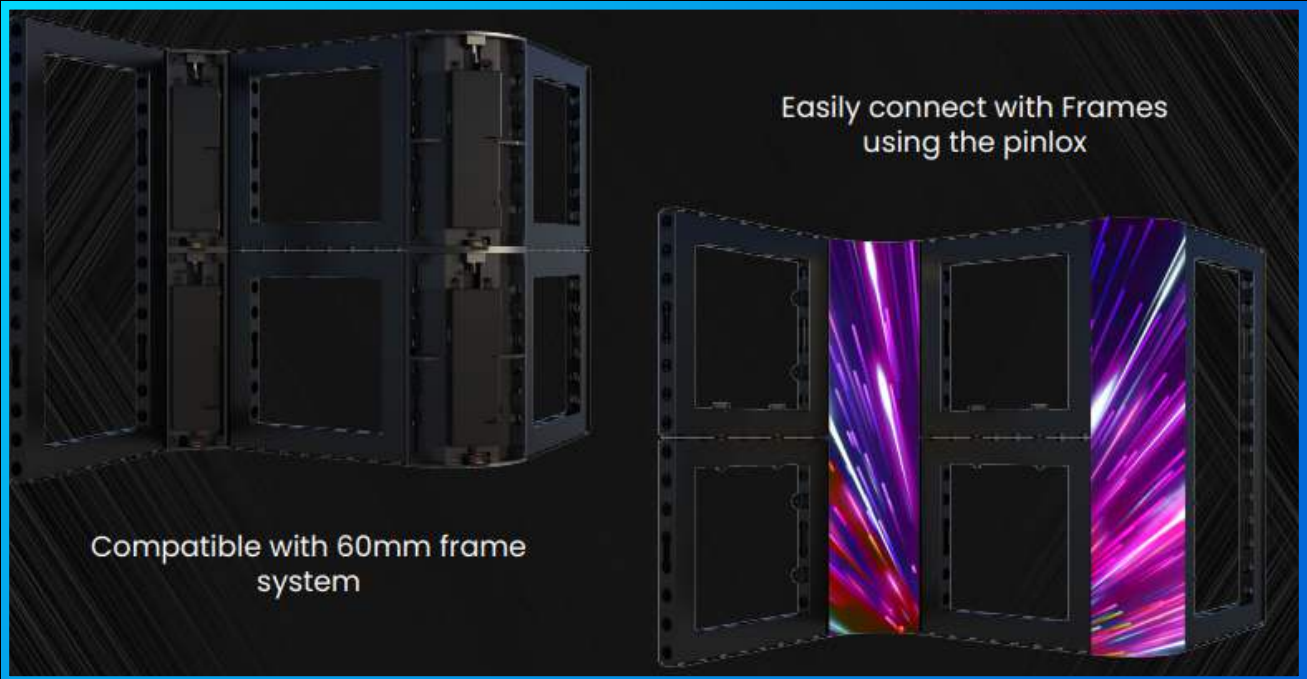


Easily connect with DRE



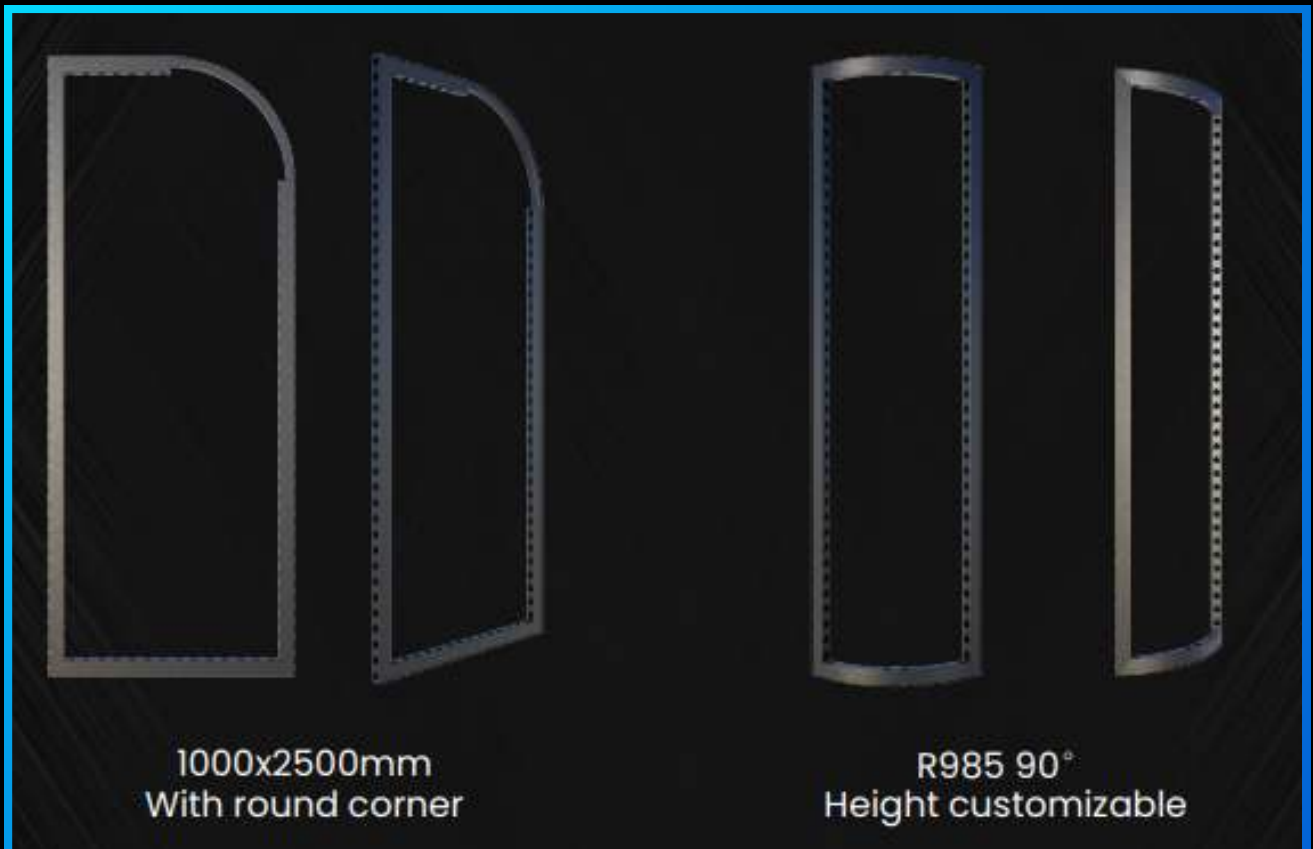
Freely dieassmeble and connect them in different way

# 90 DEGREE CORNER

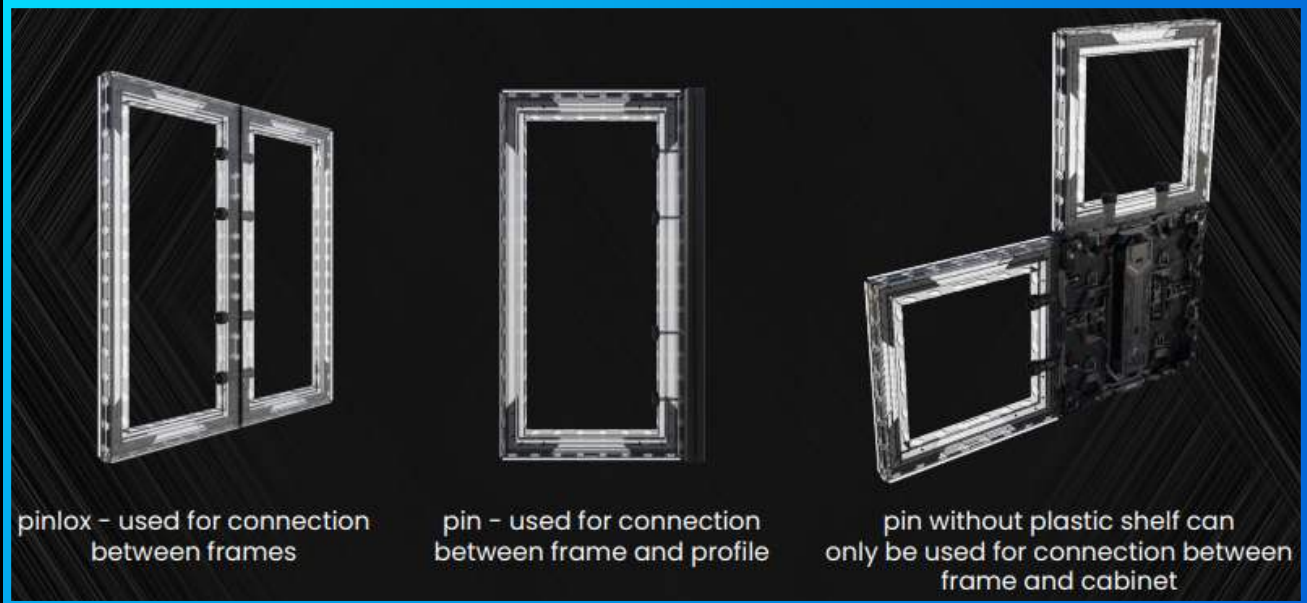


# FRAME EXTENSION

Frame size customizable



# PIN LOX CONNECTION



# PIN LOX CONNECTION



# FRAME EXTENSION

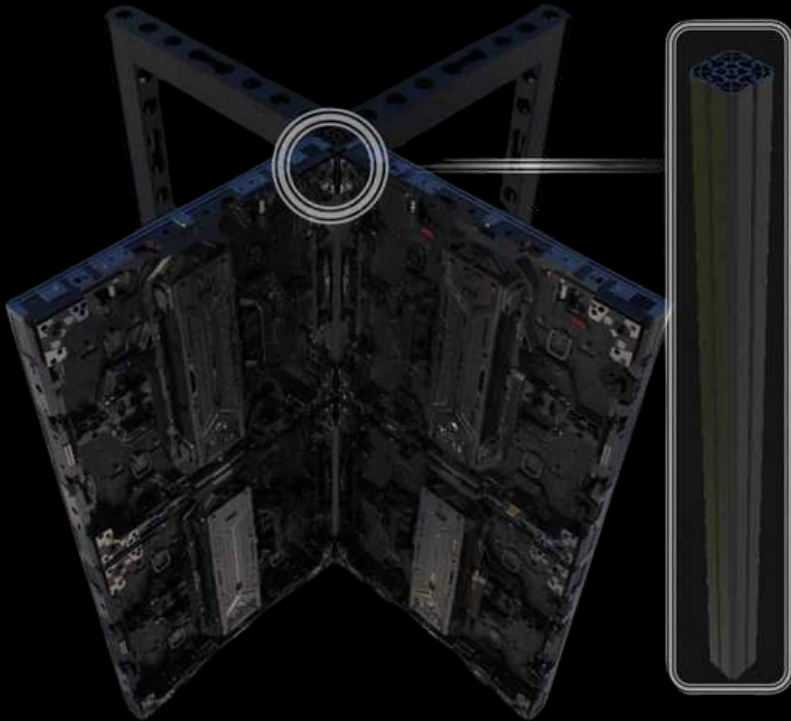


# PIN LOX CONNECTION



# PROFILES

---



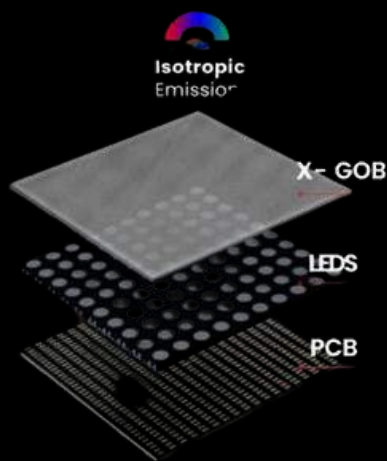
Square profile used to 90° connect three or more cabinets/frames

One-quarter round profile used to 90° connect two cabinets/frames



# TECHNOLOGY – MICROX - MIP

## MicroX MIP



# CONTACT

---



*146a Brick Lane, London, E1 6RU*



*0203 489 9878*



*Rowan House, Long Toll, Oxfordshire, RG8 0RR*



*sales@dynamo-led-displays.co.uk*



*0845 257 2300*

